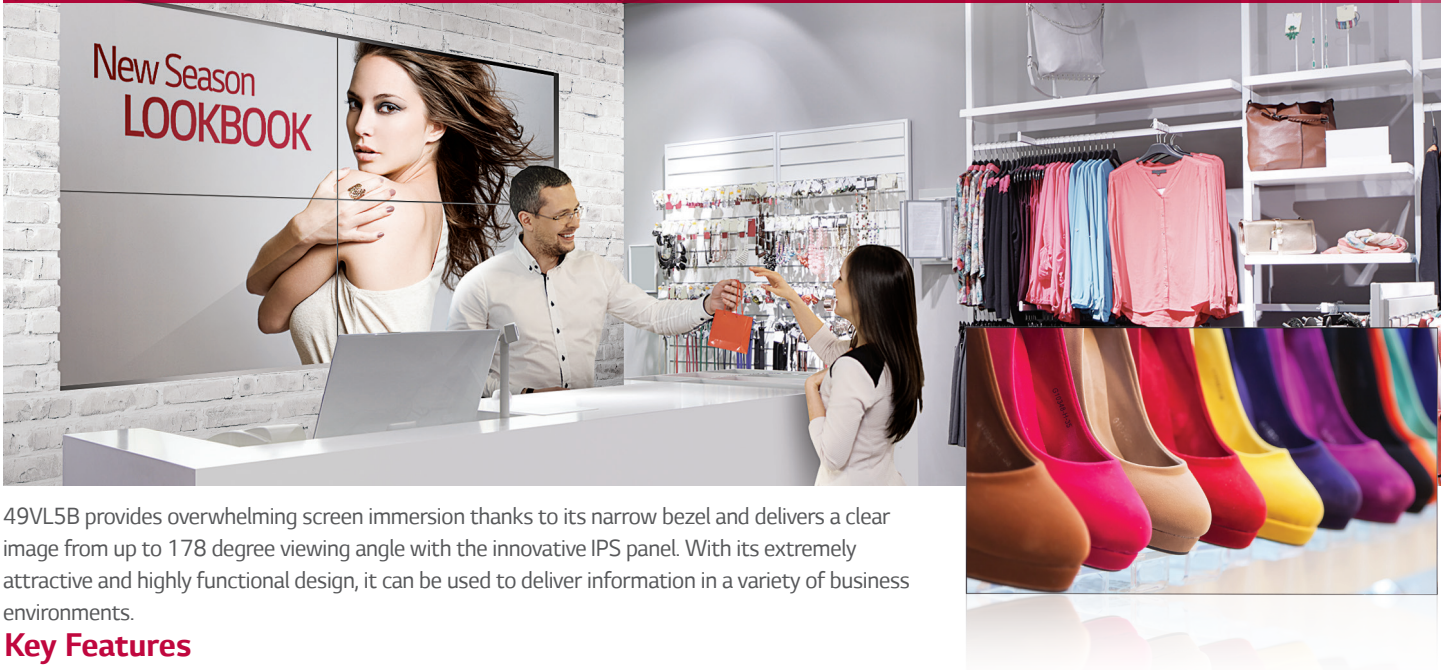


Enhanced Viewing Experience

Narrow Bezel Video Wall 49VL5B



49VL5B provides overwhelming screen immersion thanks to its narrow bezel and delivers a clear image from up to 178 degree viewing angle with the innovative IPS panel. With its extremely attractive and highly functional design, it can be used to deliver information in a variety of business environments.

Key Features

Narrow Bezel



Super-Narrow Bezel

The super-narrow bezel video wall creates a visually stunning digital wall that is efficiently installed, maintained and managed.



Bezel to Bezel
3.5mm
 2.3mm (Left/Top),
 1.2mm (Right/Bottom)

Advanced IPS Technology



Wide Viewing Angle

IPS panel technology means a more advanced control of the liquid crystal display. As a result, it allows users to view the screen from virtually any angle.



Stable Panel

IPS (In-Plane Switching) technology enhances the performance of liquid crystal displays. Response times are shortened, color reproduction is improved, and users can now view the screen at virtually any angle.

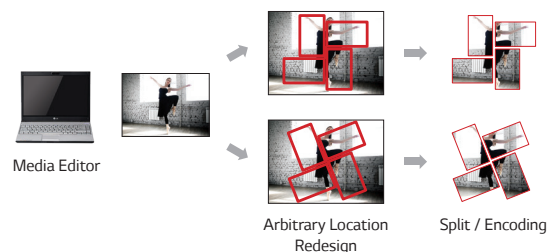


Content Management



SuperSign W-Lite for Content Management

Flexible content editing in various layouts, including both regular and irregular video-wall layouts, is made possible in a timely and cost-effective manner without the need for an expensive video-wall console.



Enhance a Seamless Viewing Experience



Screen Size

49"

49VL5B

- Brightness : 450cd/m²
- Bezel to Bezel : 3.5mm
- Depth : 3.5"
- Interface : HDMI / DVI / RGB / RJ45 / USB / RS232C



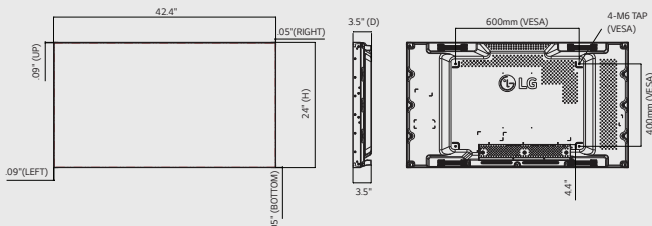
Specifications

	49VL5B	
PANEL	Screen Size	49" (48.50" diagonal)
	Panel Technology	IPS
	Aspect Ratio	16 : 9
	Native Resolution	1,920 x 1,080 (FHD)
	Brightness	450cd/m ²
	Contrast Ratio	1,300 : 1
	Viewing Angle (H x V)	178 x 178
	Response Time	8ms (G to G)
	Surface Treatment	Hard coating (3H), Anti-glare treatment of the front polarizer (Haze 10%)
	Life time	50,000 Hrs
CONNECTIVITY	Orientation	Portrait & Landscape
	Input	HDMI, DVI-D, RGB
	Output	DVI-D
PHYSICAL SPECIFICATION	External Control	RS232C (In/Out), RJ45, IR Receiver, USB
	Bezel Color	Black
	Bezel Width	2.3mm (Left / Top), 1.2mm (Right / Bottom)
	Monitor Dimension (W x H x D)	42.4" x 24" x 3.5"
	Weight (Head)	39.3 lbs
	Carton Dimensions (W x H x D)	47.8" x 30.6" x 10.4"
	Packed Weight	50.5 lbs
	VESA™ Standard Mount Interface	600 x 400mm
SPECIAL FEATURES	Temperature Sensor, Tile Mode (Up to 15x15), Natural Mode@Tile Mode, Energy Saving, Smart Energy Saving, File Play with USB	
ENVIRONMENTAL CONDITIONS	Operation Temperature Range	32°F to 104°F
	Operation Humidity Range	10% to 80%
POWER	Power Supply	100-240V~, 50/60Hz
	Power Type	Built-in Power
	Power Consumption	Typ. 90W Smart Energy Saving 40W
STANDARD (CERTIFICATION)	Safety	UL / cUL / CB / TUV / KC
	EMC	FCC Class "A" / CE / KCC
	ErP / Energy Star	NA / Yes (Energy Star 6.0)
MEDIA PLAYER COMPATIBILITY	Slot PC compatible (optional)	No
	External Media player Attachable	Yes
SOFTWARE COMPATIBILITY	SuperSign-W Lite	Yes
	SuperSign-C	Yes
ACCESSORY	Accessory	Remote Control, Power Cable, DVI Cable, Manual, IR Receiver, RS-232C Cable, Guide Bracket, Screw
	Optional Accessory	Wall Mount (Landscape : WM-L640V, Portrait : WM-P640V)
OTHER	UPC	7 19192 19905 7
	WARRANTY	3-Year Limited Warranty (Parts and Labor) Extended Warranties Available

Dimension

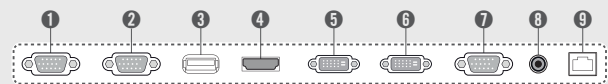
49"

42.4" x 24" x 3.5" / 39.2 lbs



Connectivity

- | | | |
|---------------|-----------|-----------------------|
| 1 RS-232C IN | 4 HDMI IN | 7 RGB/AV/COMPONENT IN |
| 2 RS-232C OUT | 5 DVI IN | 8 IR IN |
| 3 USB | 6 DVI OUT | 9 LAN |



Download LG Commercial Display Mobile App



More info www.lg.com/us/commercial/

YouTube youtube.com/c/LGCommercialDisplay

LG may make changes to specifications and product descriptions without notice.
Copyright © 2016 LG Electronics Inc. All rights reserved. "LG Life's Good" is a registered of LG Corp.
The names of products and brands mentioned here may be the trademarks of their respective owners.
LG_SPEC_49VL5B_051610_PR

